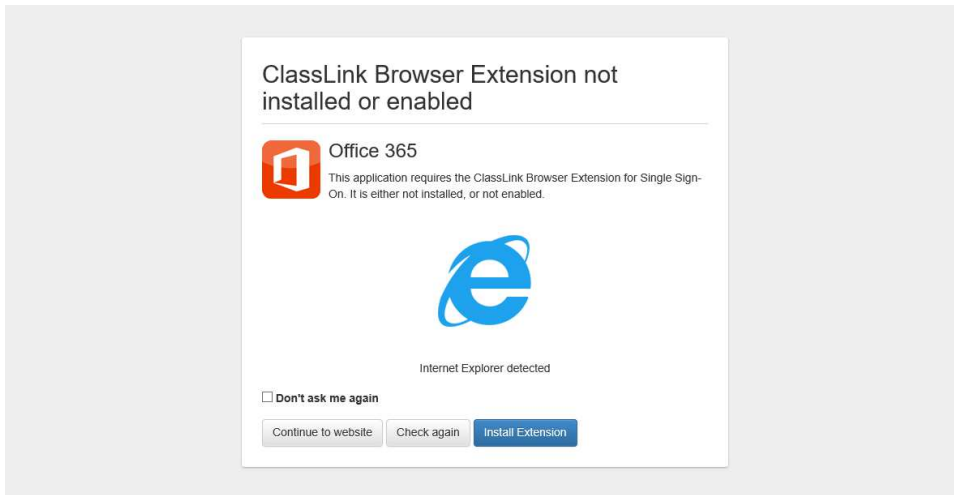


ClassLink IE PC Extension Installation

The ClassLink Extension is used to access some Single Sign-on applications.

1. To download the extension you will be prompted when you click on an application that requires the extension.



2. Click 'Install Extension'. This will open an msi file to be run at the bottom of the page. Click 'Run'.
3. Click 'Next' 3 times on the setup wizard to continue installation.
4. Click 'Yes' to allow the extension to be installed on the computer.
5. Click 'Close' on the installation window.

To continue using ClassLink, you will need to restart Internet Explorer and log back into ClassLink.

